

COSMO[®] Protect - PVC composite panel

Thermally insulated light weight with successfully tested shock-resistance



COSMO® Protect - PVC composite panel

Thermally insulated light weight with successfully tested shock-resistance



This element consists of two external PVC top coats, one further PVC central sheet for increasing the mechanical stability, as well as extruded polystyrene-rigid foam (XPS) for ensuring the thermal characteristics. With this, the element provides tested shock-resistance (a soft impact test block, designed as bag of 50 kg weight, simulates the crash test on a human body) which was tested in accordance with the French standard/test standards: NF P 08-301 and P 08-302, Test report No.: 403 / 19 / 13242.

COSMO® Protect - PVC

PVC-XPS-PVC-XPS-PVC

Top coats

- PVC compact panel
White, the external top coats are equipped with protective film
- Weather-resistant
 - UV resistant

Core material

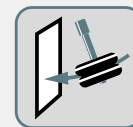
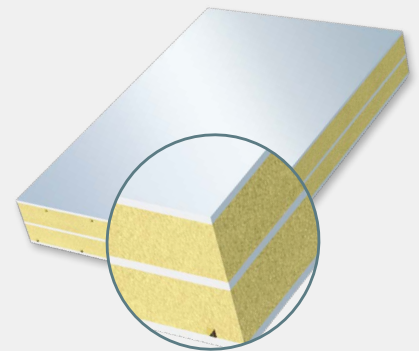
- Polystyrene-rigid foam, extruded (XPS)
- Thermal conductivity group 035
 - Raw density 33 kg/m³
 - Pressure resistance 0.30 N/mm² as per DIN 53421
 - Moisture-resistant
 - CFC- and HCFC-free

Tests

- Successfully tested for shock resistance as per following standards/test standards: NF P 08-301, P 08-302 (France) Test report No.: 403 / 19 / 13242
- LNE CERTIFIED (P191046) according to „EN 13501-1+A1 : 2013“ tested: classification **E**.
- certified by Avis Technique - No. 6/16-2330_V2

Standard size (mm)

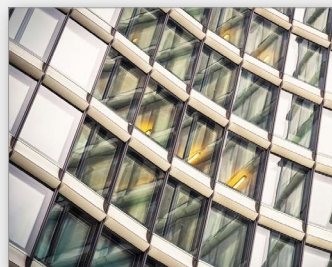
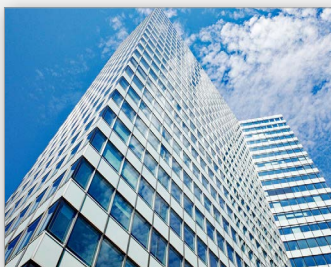
3.000x1.500mm



Panel thickness (mm)	Top coats (mm)	Core material (mm)	Central sheet (mm)	U-value (W/m ² K)	Specific weight (kg/m ²)
24	1.30	10	1.30	1.246	5.7
28	1.30	12	1.30	1.083	5.9

The light-weight and excellent heat-insulating alternative to our COSMO®plan S integral rigid foam panel

Application as balustrade element



Weiss Chemie + Technik GmbH & Co. KG
Hansastr. 2
D-35708 Haiger
Business Area Composite panels

Phone: +49 (0) 2773 / 815 - 0
Fax: +49 (0) 2773 / 815 - 200
www.weiss-chemie.de
E-mail: se@weiss-chemie.de