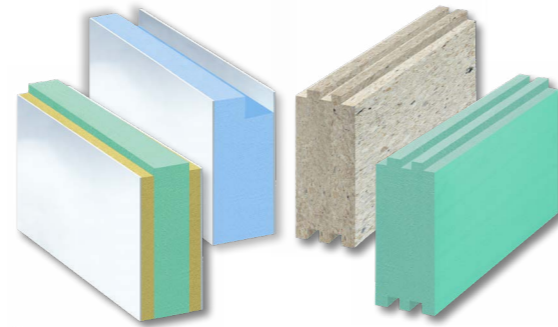


Edge work with tongue and groove

Markets and requirements change over time – while many processors preferred doing the profile furring and edge work themselves in the past, at present, requests for profiled off-the-shelf goods are increasing. In order to meet these wishes and requirements, we have invested in an ultra-modern edge-working centre. With it, we are able to process all standard material combinations.

Key data:

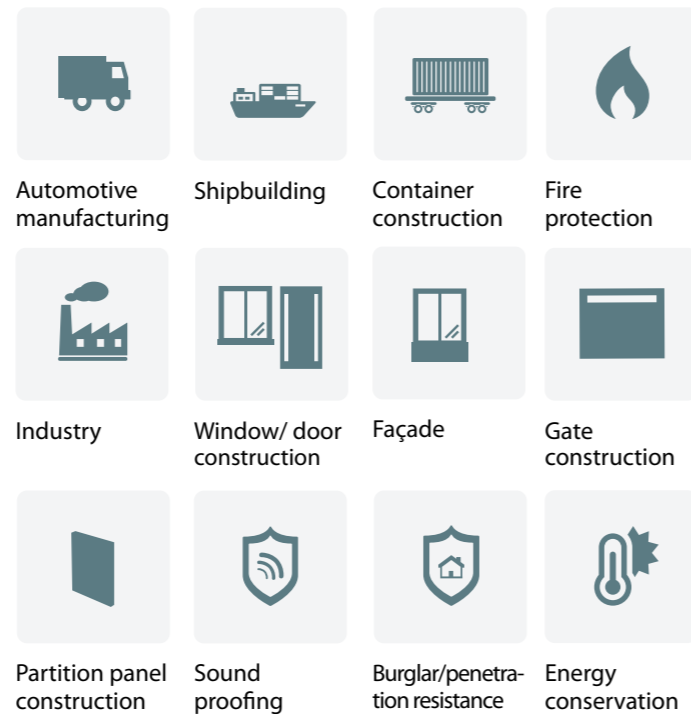
- Off-the-shelf goods up to 4,500 mm long
- Off-the-shelf goods up to 102 mm thick
- Off-the-shelf goods with individual widths
- Groove depth of up to 70 mm
- Complex edge geometries possible
- Minimum quantities on request



COSMO® Composite panels



COSMO® Therm (heat-insulating)
COSMO® Silent (sound insulating)
COSMO® Protect (penetration resistant)
COSMO® Design (grooved)
COSMO® Tech (individual)
COSMO® Frame (frame widening)



COSMO® Adhesives

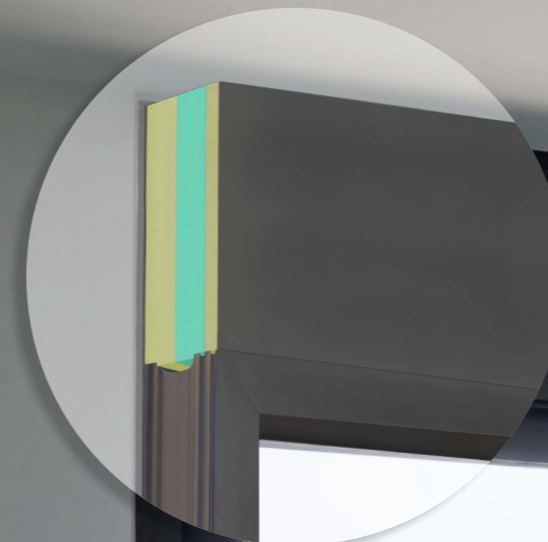


COSMO® CA (Cyanoacrylates)
COSMO® PU (Polyurethane adhesives)
COSMO® CL (Cleaning agent)
COSMO® SL (Diffusion adhesives)

COSMO® HD (Hybrid adhesives)
COSMO® EP (Epoxy resin adhesives)
COSMO® DS (Dispersion adhesives)
COSMO® SP (Service products)

COSMO® Composite panels

Frame widening elements & basic elements for base constructions



Weiss Chemie + Technik GmbH & Co. KG
Hansastr. 2
D-35708 Haiger
Business Area Composite panels
Business area Adhesives

Phone: +49 (0) 2773 / 815 - 0
Fax: +49 (0) 2773 / 815 - 200
www.weiss-chemie.de
E-mail: se@weiss-chemie.de
E-mail: ks@weiss-chemie.de

made by weiss



COSMO® Frame

Frame widening elements (RVE), basic elements as well as base constructions

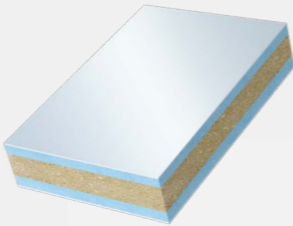
Thermally insulated composite panels for widening the profile in window construction.

COSMO® Frame – PVC

PVC on both sides, XPS/PR core



- Top coats
- PVC compact panels, white with protective film
- Core material
- Polystyrene rigid foam, extruded (XPS); PUR-recycling panel (PR)
- Tests
- Airborne sound insulation
 - as per EN ISO 717-1 Rw 40 (-1;-1) dB, ift 164 32607/Z10
- Special Properties
- Noise insulating
 - Moisture-resistant
 - Weather-resistant
 - UV resistant
 - CFC- and HCFC-free
 - Suitable for sawing, milling, grinding, slot cutting, screwing and drilling
- Examples of application
- Widening of frames
 - Substructure of lifting/sliding doors
- Standard size (mm)
- 3000x1500, 4000x1500



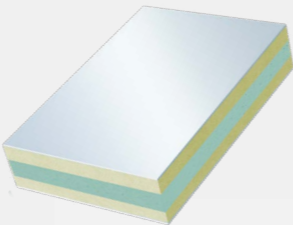
Catalogue no.	Panel thickness (mm)	Top coats (mm)	Core material (mm)	Weight (kg/m²)	WLG (XPS/PR) (thermal conductivity group)	Sound insulating factor (dB)	U-value (W/m²K)
600 001	70	2	28/26/12	22.2	030/070	36	0.50
600 002	74	2	26/44/21	22.5	030/070		0.47
600 003	84	2	20/26/34	22.8	030/070		0.40
600 004	86	2	8/26/48	22.9	030/070		0.39
600 005	88	2	12/26/46	23.0	030/070		0.38
600 006	90	2	12/26/48	23.1	030/070		0.37

COSMO® Frame – PVC

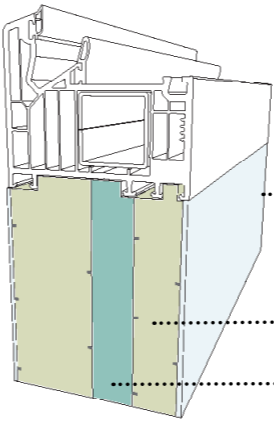
PVC on both sides, XPS/TP core



- Top coats
- PVC compact panels, white with protective film
- Core material
- Polystyrene rigid foam, extruded (XPS); thermoplastic plastics (PR)
- Special Properties
- Moisture-resistant
 - Weather-resistant
 - UV resistant
 - CFC- and HCFC-free
 - Suitable for sawing, milling, grinding, slot cutting, screwing and drilling
 - Swelling-resistant and no changes of dimensions
- Examples of application
- Widening of frames
 - Substructure of lifting/sliding doors
- Standard sizes (mm)
- 3000x1500, 4000x1500



Catalogue no.	Panel thickness (mm)	Top coats (mm)	Core material (mm)	Weight (kg/m²)	WLG (XPS/PR) (thermal conductivity group)	Sound insulating factor (dB)	U-value (W/m²K)
605 001	70	2	12/26/28	13.3	035/045		0.49
605 002	74	2	18/26/26	13.4	035/045		0.43
605 003	84	2	20/26/34	13.7	035/045	33	0.38
605 004	90	2	12/26/48	13.9	035/045		0.35



Example of application: RVE

Top coats: PVC compact panels, white with protective film

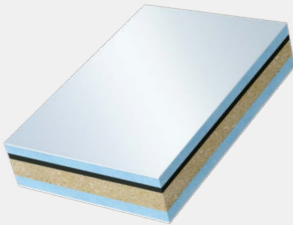
- Core materials:
- Polystyrene-rigid foam, extruded (XPS)
 - Thermoplastic plastics material (TP)

COSMO® Frame (dB) – PVC

PVC on both sides, XPS/PR core, heavy film insert



- Top coats
- PVC compact panels
- Core material
- Polystyrene rigid foam, extruded (XPS); PUR-recycling panel (PR)
- Tests
- Airborne sound insulation
 - as per EN ISO 717-1 Rw 36 (-1;-1) dB, ift 164 32607/Z11
- Special Properties
- Moisture-resistant
 - Weather-resistant
 - UV resistant
 - CFC- and HCFC-free
 - Suitable for sawing, milling, grinding, slot cutting, screwing and drilling
- Examples of application
- Widening of frames
 - Substructure of lifting/sliding doors
- Standard sizes (mm)
- 3000x1500, 4000x1500



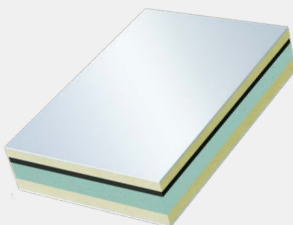
Catalogue no.	Panel thickness (mm)	Top coats (mm)	Core material (mm)	Weight (kg/m²)	WLG (XPS/PR) (thermal conductivity group)	Sound insulating factor (dB)	U-value (W/m²K)
601 001	70	2	24/4,0/26/12	32.2	030/070	40	0.53
601 002	74	2	22/4,0/44/21	32.3	030/070		0.50

COSMO® Frame (dB) – PVC

PVC on both sides, XPS/TP core, heavy film insert



- Top coats
- PVC compact panels, white with protective film
- Core material
- Polystyrene rigid foam, extruded (XPS); thermoplastic plastics (PR)
- Special Properties
- Noise insulating
 - Moisture-resistant
 - Weather-resistant
 - UV resistant
 - CFC- and HCFC-free
 - Suitable for sawing, milling, grinding, slot cutting, screwing and drilling
 - Swelling-resistant and no changes of dimensions
- Examples of application
- Widening of frames
 - Substructure of lifting/sliding doors
- Standard size (mm)
- 3000x1500, 4000x1500



Catalogue no.	Panel thickness (mm)	Top coats (mm)	Core material (mm)	Weight (kg/m²)	WLG (XPS/PR) (thermal conductivity group)	Sound insulating factor (dB)	U-value (W/m²K)
602 001	70	2	24/4,0/26/12	21.7	030/045		0.48
602 002	74	2	22/4,0/44/21	21.8	030/045		0.45
602 003	84	2	20/4,0/26/30	23.5	035/045	37	0.39