

An overview of our range of products

Experience quality on a whole new level, with the powerful products by Weiss:



COSMO® Adhesives Durably firm joints

COSMO® CA (Cyanoacrylates)
COSMO® PU (Polyurethane adhesives)
COSMO® CL (Cleaning agents)
COSMO® SL (Dispersion adhesives)
COSMO® HD (Hybrid adhesives)
COSMO® EP (Epoxy-resin adhesives)
COSMO® DS (Dispersion adhesives)
COSMO® SP (Service products)

Fields of application

- + Windows and doors
- + Transportation / Marine engineering
- + Industry
- + Assembly
- + Dry construction
- + Airtight bonding
- + Wood / Furniture industry
- + Container construction
- + Composite panels
- + Fire protection
- + Advertising industry

Do you have any questions?

Our Service Center
Business area Adhesives:
+49 (0) 2773 / 815 - 255
+49 (0) 2773 / 815 - 274



COSMO® Composite panels Unlimited possibilities for design

COSMO® Therm (heat-insulating)
COSMO® Silent (sound insulating)
COSMO® Protect (penetration resistant)
COSMO® Design (grooved)
COSMO® Tech (individual)
COSMO® Frame (frame widening)

Fields of application

- + Window and façade
- + Door construction
- + Industry
- + Automotive manufacturing
- + Trailer construction
- + Partition panel construction
- + Gate construction
- + Container construction
- + Energy conservation
- + Fire protection
- + Burglar resistance
- + Sound proofing

Do you have any questions?

Our Service Center
Business Area Composite panels:
+49 (0) 2773 / 815 - 321

Our Service Center
Business area Façade:
+49 (0) 5245 / 9241 - 21



PUDOL Cleaning and care agent Cleanliness refreshes your senses

PUDOL SOFT
Mild cleaning agent for sensitive materials
PUDOL CARE
Maintenance product for high gloss and hygiene
PUDOL POWER
Powerful cleaning agent for extreme pollution
PUDOL FRESH
Cleaning agent for cleanliness and fresh air

Fields of application

- + Flooring
- + Sanitary installations
- + Clothing care
- + Foodstuff industry
- + Household and gastronomy
- + Windows and glass
- + Dishwasher
- + Carpet and upholstery
- + Industry and workshop
- + Cars
- + Skin cleaning
- + Skin protection

Do you have any questions?

Our Service Center PUDOL:
+49 (0) 2743 / 9212 - 0

COSMO® Composite panels

For ship and yacht building



weiss

Plant I
Weiss Chemie + Technik
GmbH & Co. KG
Hansastr. 2
D-35708 Haiger

Phone: +49 (0) 2773 / 815 - 0
Fax: +49 (0) 2773 / 815 - 200
E-mail: ks@weiss-chemie.de

www.weiss-chemie.de

made by weiss

Plant II
Weiss Chemie + Technik
GmbH & Co. KG
Siemensstr. 8
D-33442 Herzebrock-Clarholz

Phone: +49 (0) 5245 / 9241 - 0
Fax: +49 (0) 02773-815-300
E-mail: se@weiss-chemie.de

PUDOL



A subsidiary of the
Weiss Group

Cleanliness refreshes your senses

Pudol Chemie GmbH & Co. KG
Bahnhofstr. 2
D-57520 Niederdreisbach

Phone: +49 (0) 2743 / 9212 - 0
Fax: +49 (0) 2743 / 9212 - 71
E-mail: info@pudol.de
www.pudol.de

weiss

COSMO® Composite panels for shipbuilding

Lightweight construction with INNOVATIVE materials

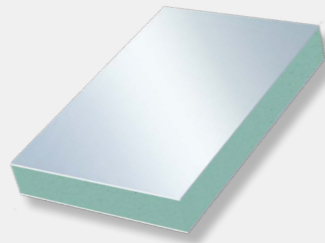
Especially in shipbuilding, special requirements are made on the elements to be used. We offer many different solutions that satisfy the high demands, for example on the moisture and UV resistance. Moreover, our elements offer a low weight and stand-out with their outstanding mechanical properties.

COSMO® Tech - GFK



GRP on both sides, TK-core

- Top coats** Glass-fibre reinforced plastics (GRP)
- Core material** Thermoplastic plastics (TP / DNV-GL certified) (also available in XPS)
- Formats (mm)** (Length x Width) 2,000 x 1,800 / 4,000 x 2,000 / 2,300 x 1,250
2,000 x 1,250 / 3,000 x 1,800 / 3,000 x 1,500
Other dimensions on request



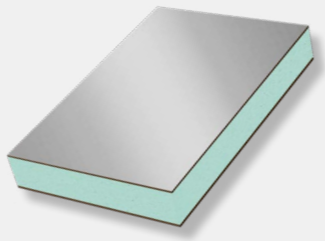
Catalogue no.	Panel thickness (mm)	Top coats (mm)	Core material (mm)	Weight (kg/m ²)	U-value (W/m ² K)
535,100	23	1.5	20 / TK150	7.9	1.48
535,101	29	1.5	26 / TK150	8.8	1.22
535,102	23	1.5	20 / TK200	8.9	1.53
535,103	29	1.5	26 / TK200	10.1	1.26

COSMO® Tech - HPL



HPL on both sides, TK core

- Top coats** High pressure laminated panels (HPL / IMO certified)
- Core material** Thermoplastic plastics (TP / DNV-GL certified) (also available in XPS)
- Formats (mm)** (Length x Width) 2,800 x 1,860, 2,800 x 2,070, other dimensions on request
- Colours** Different colours are possible



Catalogue no.	Panel thickness (mm)	Top coats (mm)	Core material (mm)	Weight (kg/m ²)	WLG (thermal conductivity group)	U-value (W/m ² K)
532,100	28	2.0	24	9.8	045	1.30
532,101	30	2.0	26	10.1	045	1.22

COSMO® Plan S integral rigid foam panel

The white surfaces have a noble satin effect. They are ideal for ceiling elements as well as for use in sanitary areas.

- Special Properties**
 - Good processing properties
 - Fine, smooth surface
 - Weather resistant & UV stable
 - Versatile use
 - Pressure resistant according to DIN EN ISO 844: >3 Mpa
 - Shore D according to DIN EN ISO 868: -75

- Formats (mm)** (Length x Width x Height)
 - 3,000 x 1,250 x 8-30 mm
 - 3,000 x 1,560 x 10 / 19 mm



Examples for application



Module and furniture construction Room elements

● Tables, cabinets & seating elements

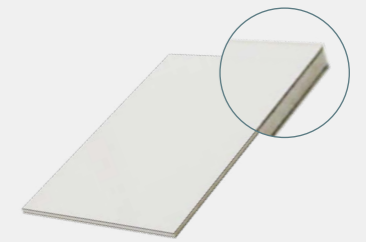
● Ceilings, walls & floors

COSMO® Tech - HPL



HPL on both sides, silicate

- Top coats** High pressure laminated panel (flame resistant / IMO certified)
- Core material** Silicate (non-flammable / IMO certified)
- Formats (mm)** Dimensions on request
- Colour** Different colours are possible

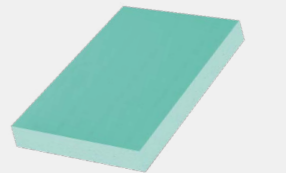


COSMO® TP - An innovative construction material

(TP=thermoplastic plastics) DNV-GL certified

Special Properties

- Minimum absorption of humidity
- Outstanding mechanical characteristics
- Low weight
- Screwable
- Durably moisture-resistant
- Swelling-resistant, i.e. no changes of dimensions
- High pressure resistance
- Environment-friendly core material (100% recyclable)



Construction and surface adhesives



Our business area Adhesives would be pleased to advise you on your bonding tasks. Please find further information in our brochure „Transportation & Marine“.



Certified adhesive systems in the shipbuilding area

Approval BG Verkehr, Hamburg / Low flammability

The quality management system of Weiss complies with module D (quality assurance production) of the 2014/90/EC directive on marine equipment. The approved adhesive systems are subject to this quality assurance system. These special requirements of shipbuilding are arguably met by the following adhesives marked by the steering wheel.

