

You could also be interested in these products



COSMO® HD-100.400

1-MS-Adhesive

The allrounder

For a wide range of applications. It achieves good adhesion values on various surfaces, compensates the expansion of different materials due to elastic adhesive joints and provides for high strength of the adhesive joint.

Packages 310ml-Euro cartridge
600ml-sachet

Colours White, grey, black



COSMO® HD-100.410

2-C-MS-Adhesive

The sealer

In all places where a very elastic sealing joint with a high breaking elongation is important, this adhesive sealant based on MS polymer can be used. It compensates the expansion of different materials. Very good weather-resistance and good UV stability.

Packages 310 ml-Euro cartridge
600 ml-sachet

Colours White, grey, black

COSMO® 1-C-Sealing Assembly Adhesives

With our compact product range of one-component MS polymer adhesives, consisting of six sealing assembly adhesives, we are able to cover a variety of bonding tasks for assembly works for which a very good aging and weather resistance is required.



COSMO® Adhesives

COSMO® HD-200.101

The controlled one



weiss

Weiss Chemie + Technik GmbH & Co. KG
Hansastr. 2
D-35708 Haiger

Phone: +49 (0) 2773 /
815 - 0
Fax: +49 (0) 2773 / 815 - 300
E-mail: ks@weiss-chemie.de
www.weiss-chemie.de

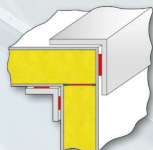
weiss

COSMO® HD-200.101

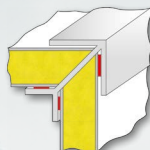
2-Component-STP-Adhesives

Used for bonding and sealing assembly applications in the automotive and vehicle body manufacturing.

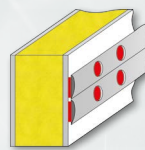
High safety through controlled full hardening!



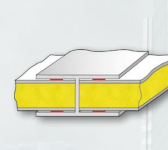
Roof angles



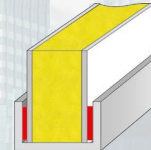
Corner angles



Strips



Butt joints



Stop beads

- Suitable for very thick adhesive joints, without hardening problems
- Elastic adhesive joint
- Fast and controlled full hardening
- High tear resistance
- No additional input of humidity in the adhesive joint
- Full process control
- Adheres to a wide variety of substrates
- High weather-resistance
- It can be coated over
- No H351 (R40) marking



Pot life at +20°C:	35 minutes
Shore A:	60
Tensile shear strength at +20°C:	4.0 N/mm ²
Breaking elongation:	260%
Functional strength:	After 2.5 h.
Density:	1.49 g/cm ³
Mixing ratio:	2:1
Content:	400ml / 590g

For pre-treatment we recommend our **Activator COSMO® CL-310.110**

It cleans and activates bonding surfaces.

It improves the adhesion to PVC, ABS, PC, GRP based on polyester or polyamide and powder coated surfaces.



Please refer to our *Technical Datasheet* for further information

made by **hess**