

# **COSMO Airtight Bonding**

*Adhesives from one source for the system provider*





Quality, service and high delivery reliability are the basic pillars of the success of our group of companies. We have continuously improved and further developed our portfolio in the past years, including through the acquisition of new companies. By now, about 300 employees at four sites participate in the success of our group.



### Company

By pooling the core competences of adhesives and composite panels under a single roof, we are able to offer solutions from one source to our customers that are both economical and of high technical quality.

We are among the leading manufacturers in both segments in Europe and moreover, we also increasingly sell our products outside of Europe, such as in China, Russia and the USA.

### Company history

Since the company's foundation in 1815, Weiss has developed from a small hide-glue producer to an internationally acting, industrial company for modern adhesive systems and composite panels. With a passion for quality and the aspiration to meet our customers' high expectations, we are a recognised and reliable partner on the market.

**! Weiss is the only enterprise that produces adhesives and composite panels.**

## Powerful product range

### Business area Adhesives

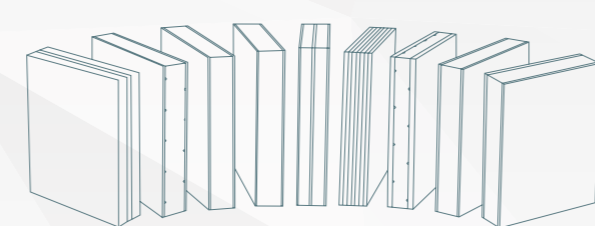


#### Durable firm bonding

Traditional bonding technologies like riveting, soldering, welding, or screwing are more and more replaced by modern adhesive systems, resulting in many advantages.

Our product range includes more than 400 variants of surface and construction adhesives, as well as instant and special adhesives for a wide variety of applications.

### Business area Composite panels



#### Unlimited possibilities of design

Composite panels made by Weiss leave nothing to be desired. Because there is a large number of top coats and core materials available as well as the possibility of combining and processing them in many different ways, a vast number of creative designs results for the finished element.

## Agenda

Weiss is offering highly loadable adhesive systems tailored to your special requirements in the field of **Airtight Bonding**. On the basis of our long-term experience in the building practice and the intensive exchange of experience with our customers in industry and trade as well as the system providers and our cooperation in research groups we have continuously been enhancing our possibilities in the adhesive technology.



## Certifications

### Low-emission adhesives from Weiss / [www.emicode.de](http://www.emicode.de)

#### GEV-EMICODE®- licensed products

EMICODE® is a recognised standard for construction products promoting healthy living and it is a quality label for the proof of low VOC-emissions from adhesives et al. Products labelled with EMICODE® are modern, solvent-free, and low-emission building products.



### The "DIN-certified bio-based" label / [www.dincertco.de](http://www.dincertco.de)

A neutral and transparent quality label regarding the content of bio-based carbon and the product quality makes finding resource-efficient products easier. By using the "DIN-certified bio-based label" it is certified that we use bio-based raw materials and undergo regular monitoring.



8C092

## Your contribution for the all-around protected building envelope

### Why is air- and windtight bonding required?

The topic of "Airtightness of the building envelope" has become more and more importance in the last years and this was not only because of the continuously rising energy costs and the increasing impact of environment. In this process, preservation of building stock plays an equally important roll, because this effectively prevents expensive repair measures caused by structural damages.

### The airtight building envelope..



... Provides long-term protection from structural damages!



...Reduces costs by saving energy.



...Provides for the preservation of the building.



...Meets future statutory provisions referring the building standard.



...Provides for healthy room climate.



...Improves the feelgood factor.



...Protects from mould fungi.



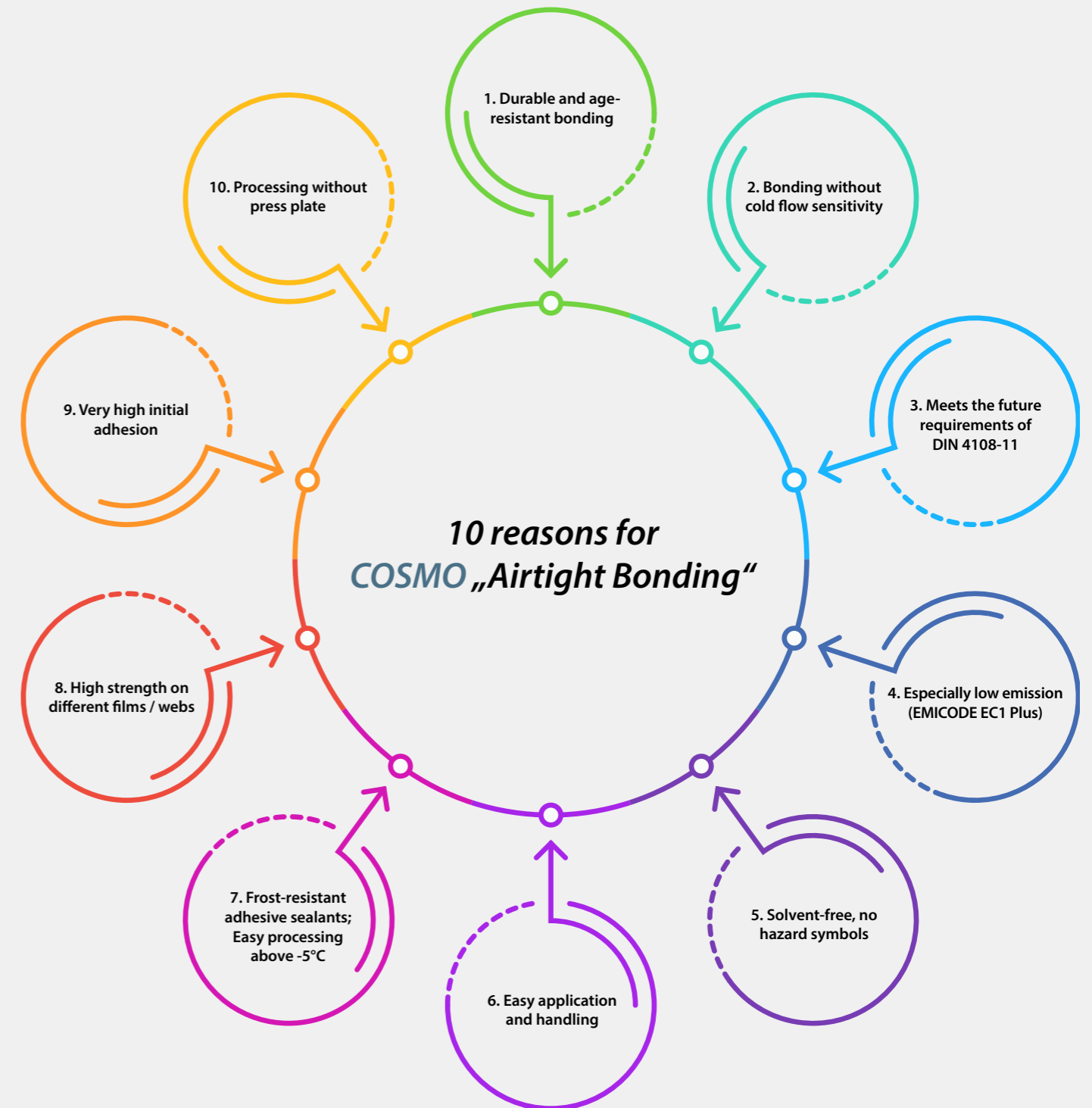
...Saves energy while reducing the CO2 emission.



...Makes a contribution to climate change and climate objectives 2050.

## Safety with COSMO "Airtight Bonding"

### 10 reasons why you can trust in COSMO „Airtight Bonding“



# Our applications at a glance

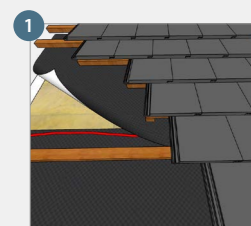
## Windtight bonding - outside

Why is it required to make the buildings windtight from the outside?

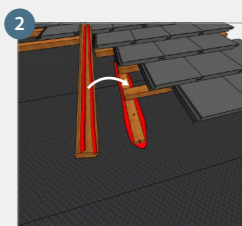
The wind- and rain-safe building envelope protects the insulation from rain, snow, and wind on the outside. The materials used as underroof, underceiling, undertrussing and façade sheets, as well as adhesives used for the sealing of the counter battens must durably be bonded in a wind- and rain-resistant way. Here, Weiss Chemie convinces by its compact product portfolio for the most diverse fields of application "around the roof" outdoors.

Product groups

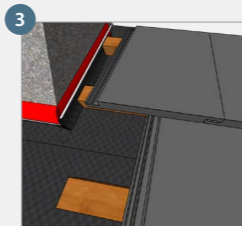
- PU** COSMO PU (Polyurethane adhesives)
- SL** COSMO SL (Diffusion adhesives)
- DS** COSMO DS (Dispersion adhesives)
- HD** COSMO HD (Hybrid adhesives)
- SP** COSMO SP (Service products)



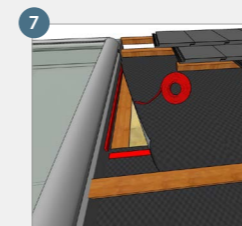
Overlapping bonding with e.g. **COSMO PU-100.120**  
 Please find further information on page 8.



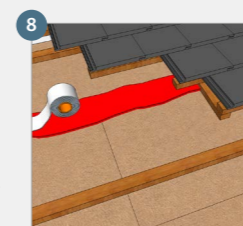
Flowable sealant for sealing of underroof, underceiling, undertrussing and façade sheets in the area of nail staples / counter batten sealing with e.g. **COSMO PU-160.230**  
 Please find further information on page 8.



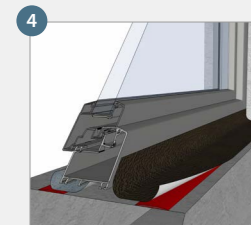
Bonding / sealing of roof underlays in the joint areas of chimneys with e.g. **COSMO PU-100.120**  
 Please find further information on page 8.



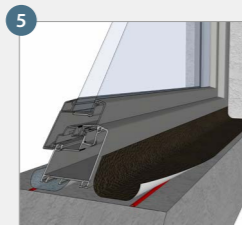
Bonding / sealing of roof underlays in the joint areas of roof windows with e.g. **COSMO DS-450.110**  
 Please find further information on page 10.



For adhesion promotion / improvement of the most diverse substrate materials with e.g. **COSMO SP-830.160**  
 Please find further information on page 10.



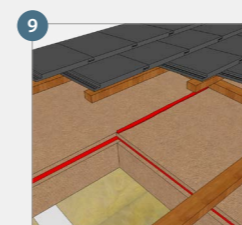
Preparation of the substrate for self-adhesive joint tapes on window and door jambs with e.g. **COSMO SP-830.160** for the RAL assembly  
 Please find further information on page 9.



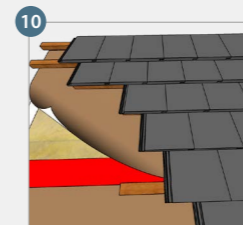
Bonding of the joint tapes on window and door jambs with e.g. **COSMO HD-100.510** for the RAL assembly  
 Please find further information on page 9.



Bonding / sealing of roof underlays in the joint areas of dormers with e.g. **COSMO HD-110.110**  
 Please find further information on page 9.



Sealing of bonded structural connections and joints in case of wood fibre insulation plates, e.g. **COSMO HD-100.495**  
 Please find further information on page 10.



Bonding of connecting and overlapping joints of TPU-coated roof undertrussing and façade sheets, with e.g. **COSMO SL-680.120**  
 Please find further information on page 11.

# Our applications in detail

## Building envelope - outside

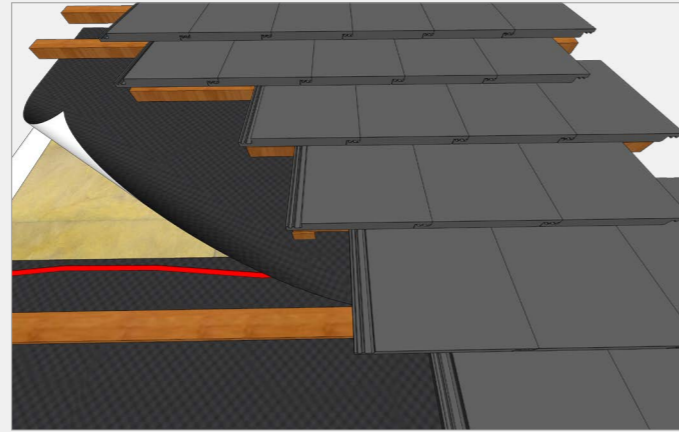
### 1 Adhesive sealant for roof underlay for bonding and sealing...

- Of the overlapping joints of underroof, underceiling, undertrussing and façade sheets

#### COSMO PU-100.120

##### Special properties:

- Optimum penetration characteristics in the fleece layer
- Interruption of fleece wick effect
- heat-resistant up to +120 °C



PRODUCT GROUP **PU**

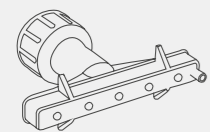
### 2 Flowable sealant for sealing...

- Of underroof, underceiling, undertrussing and façade sheets in the area of nail staples / counter batten sealing

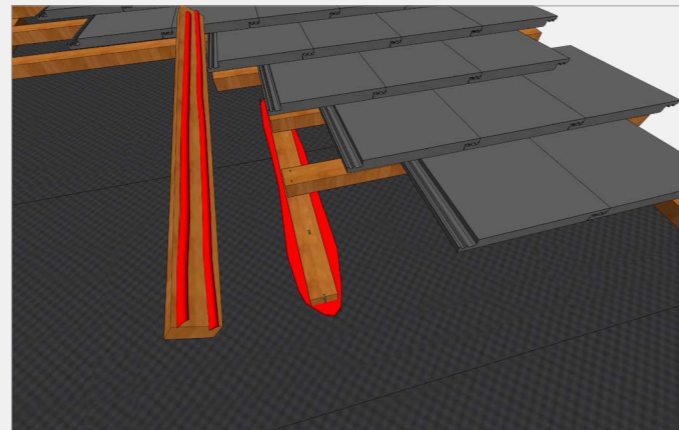
#### COSMO PU-160.230

##### Special properties:

- Especially easy handling of dosing bottle
- Interruption of fleece wick effect
- Optimum penetration characteristics in the fleece layer



**The flat nozzle for adhesives and sealants**  
The new flat nozzles guarantee the homogeneous application of adhesive over a width of 20-75mm. Optimally adapted to 48 mm and 60 mm lathing.



PRODUCT GROUP **PU**

### 3 Adhesive sealant for roof underlay for bonding and sealing...

- Of the connections on chimneys, walls, gables, roof-windows and dormers, etc.
- Of nails and staples in the area of the counter battens

#### COSMO PU-100.120

##### Special properties:

- Optimum penetration characteristics in the fleece layer
- Interruption of fleece wick effect
- heat-resistant up to +120 °C



PRODUCT GROUP **PU**

### 4 Primer / first coat...

- For preparing the substrate for self-adhesive joint tapes on window and door jambs - for the RAL assembly

#### COSMO SP-830.160

##### Special properties:

- Optimum preparation for the substrate material
- Strong bonding strength to the joint tape by self-adhesive properties
- Short flash time



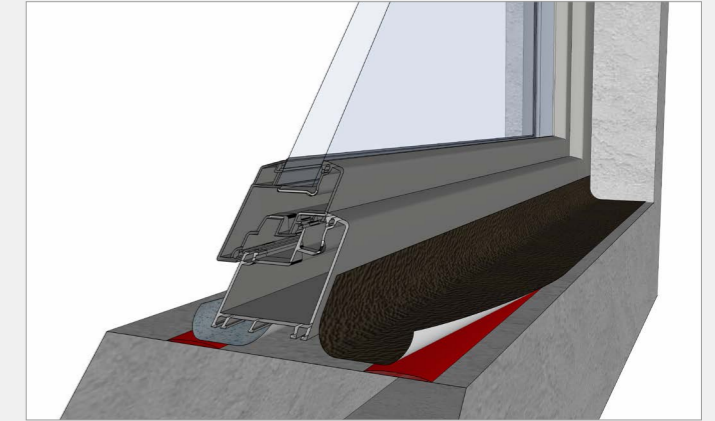
### 5 Adhesive sealant for assembly...

- For bonding of joint tapes on windows and door jambs outside - for the RAL assembly

#### COSMO HD-100.510

##### Special properties:

- Compensates expansion of different materials
- Good weather resistance outdoors
- Freeze-resistant



PRODUCT GROUP **SP**

### 6 Adhesive Sealant for roof underlays for bonding and sealing...

- Of connections on dormers, chimneys, walls, gables and roof windows, etc.
- Of the overlapping joints of underroof, underceiling, undertrussing and façade sheets

#### COSMO HD-110.110

##### Special properties:

- Chemically curing adhesive for indoor and outdoor application
- Elastic, self-adherent adhesive joint
- Fast functional strength



PRODUCT GROUP **HD**

# Our applications in detail

## Building envelope - outside

### 7 PowerFilm: Adhesive compound on the roll for bonding and sealing...

- Of connections to roof windows, dormers, chimneys, walls and gables, etc.
- Of the overlapping joints of underroof, underceiling, undertrussing and façade sheets

**COSMO DS-450.110**

#### Special properties:

- It can be processed easily, fast and cleanly
- No drying time required
- High initial adhesion



### 8 Primer / first coat...

- For adhesion promotion / improvement of acrylate, butyl and bitumen adhesive tapes on the most diverse absorbent substrate materials

**COSMO SP-830.160**

#### Special properties:

- Solvent-free, self-adhesive, strong depth effect
- Flash-off time
- Good water resistance



### 9 Adhesive sealant for sealing...

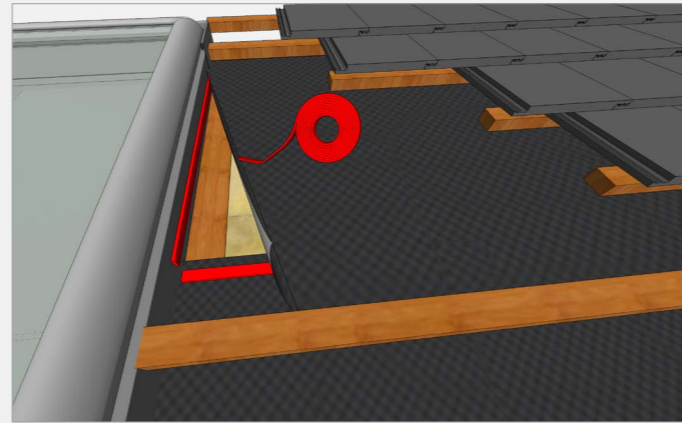
- Of bonded structural connections and joints in case of insulating fibre boards
- Of assembly and repair bonding

**COSMO HD-100.495**

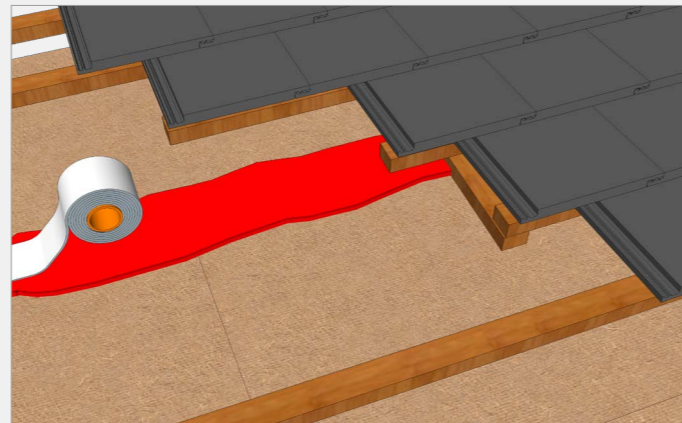
#### Special properties:

- Joint-filling, not foaming
- Good weather-resistance
- Permanently elastic along with high strength

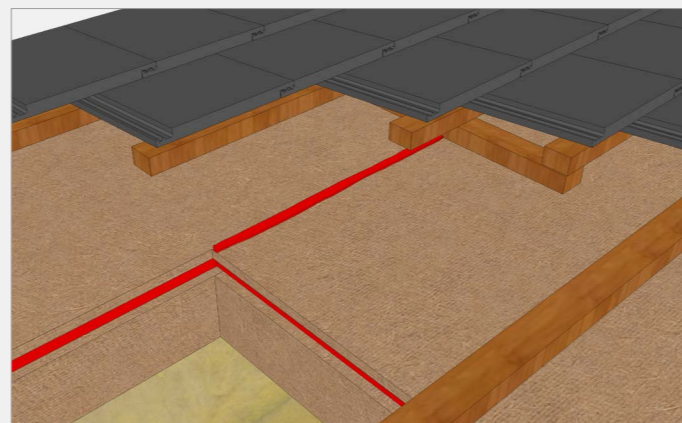
PRODUCT GROUP **DS**



PRODUCT GROUP **SP**



PRODUCT GROUP **HD**



PRODUCT GROUP **SL**

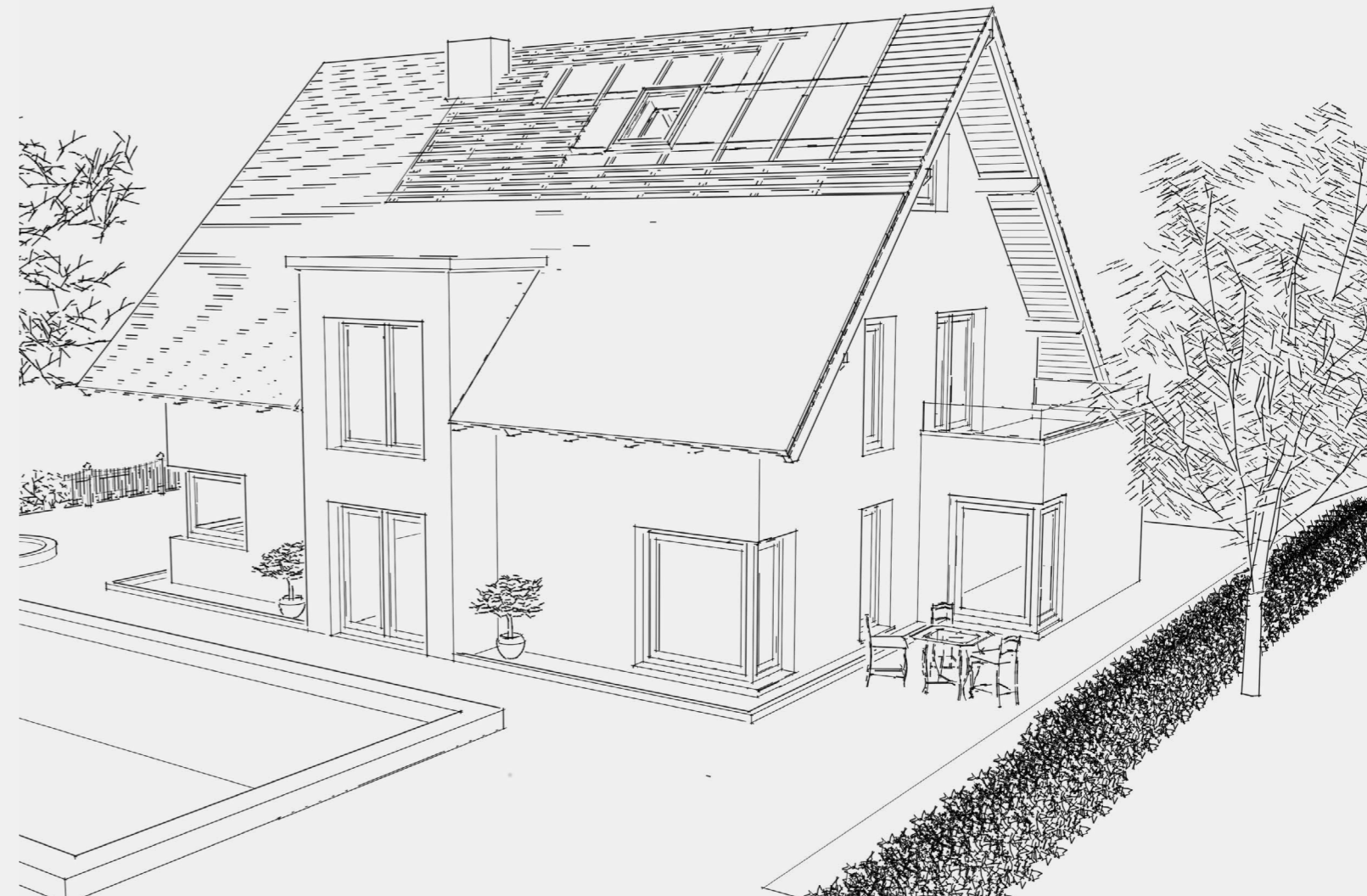
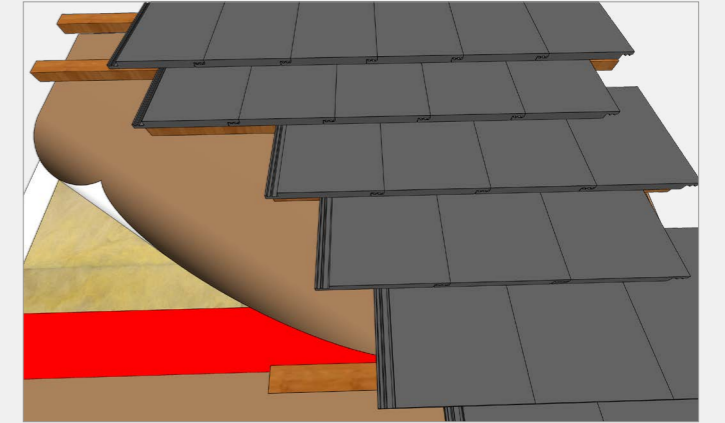
### 10 Adhesive Sealant for bonding and sealing of roof underlays of TPU webs...

- Of the overlapping joints of underroof, underceiling, undertrussing and façade sheets
- Of connections to roof windows, dormers, chimneys, walls and gables, etc.
- For sealing of cut edges

**COSMO SL-680.120**

#### Special properties:

- Very fast and high bonding strength with a wide range of application possibilities
- Overlapping / repair bonding and sealing of cut edges
- Bridges gaps



# Our applications at a glance

## Airtight Bonding - inside

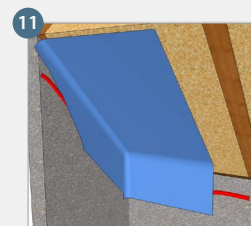
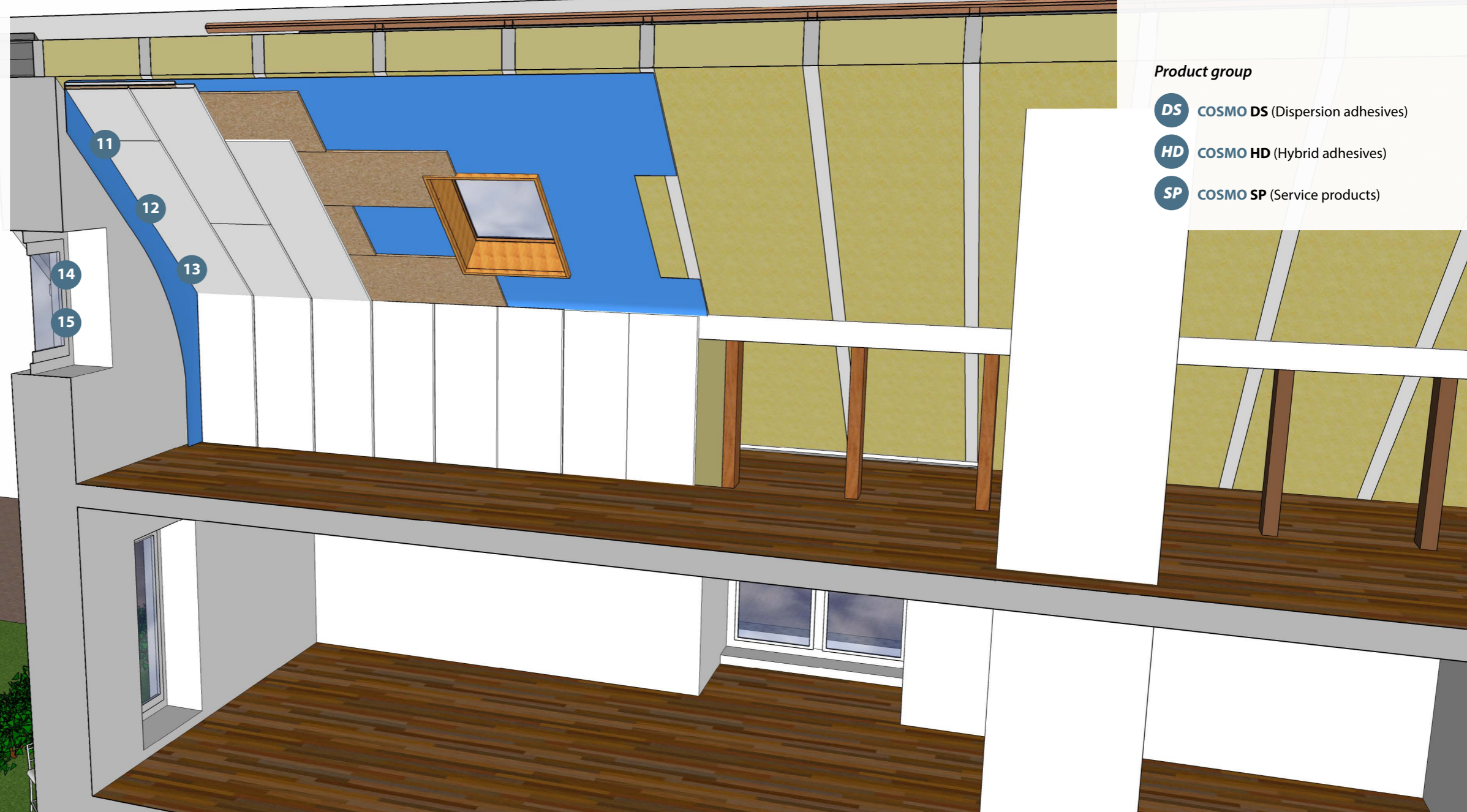
### Why should the buildings be designed in an airtight way inside?

The airtight layer protects the insulation from humidity and dew water inside the building. Furthermore, it contributes its share that the function of the heat insulation is optimally fulfilled and maintained. The materials used, like vapour checks and barriers, sealing films and window joint tapes have only an effect when they are safely and durably connected with the respective substrate material. The adhesives made by Weiss used here form such strong and durable, tight connections and in this way, they provide for the necessary safety.

## Building envelope - inside

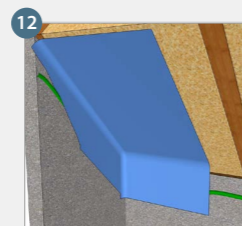
### Product group

- DS** COSMO DS (Dispersion adhesives)
- HD** COSMO HD (Hybrid adhesives)
- SP** COSMO SP (Service products)



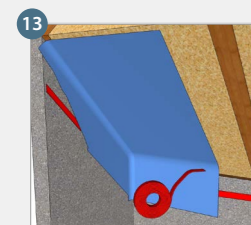
Connection bonding, e.g. with **COSMO DS-420.240**, of vapour checks/barriers on, for instance, rough and mineral substrate material

! Please find further information on page 14.



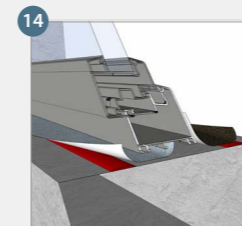
Connection bonding of vapor checks / barriers with, for instance, **COSMO DS-470.900**, **the bio-based alternative!**

! Please find further information on page 14.



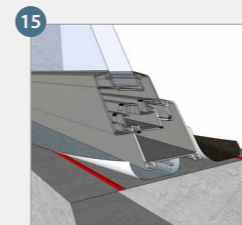
Connection bonding of vapor checks / barriers with, for instance, **COSMO DS-450.110**, **the alternative on the roll!**

! Please find further information on page 14.



Preparation of substrate for self-adhesive joint tapes on window and door jambs with, for instance **COSMO SP-830.160**, for RAL assembly as well as for adhesion promotion of acrylate, butyl and bitumen adhesive tapes on the most diverse absorbent substrate materials

! Please find further information on page 15.



For bonding of joint tapes on windows and door jambs inside with, for instance **COSMO DS-420.110**, for the RAL assembly

! Please find further information on page 15.

## COSMO BIOBASED

Our **bio-based adhesives** actively contribute to the protection of the environment: As innovative products, they have been developed with particular consideration for our limited resources, yet without losing sight of the top quality which we consider a matter of course.

In the meantime, there are numerous possibilities for processing the most diverse bio-based materials such as starch, vegetable oil, resins, lignins, proteins, and others. It is also possible to use renewable raw materials in adhesives. By substituting fossil resources, we have succeeded in developing adhesives which contain a certain amount of bio-based products.

# Our applications in detail

## Building envelope - inside

### 11 Adhesive sealant for vapour barriers for bonding and sealing...

- Of the airtight connections of vapour barriers, vapour checks and sealing films on different building substrates

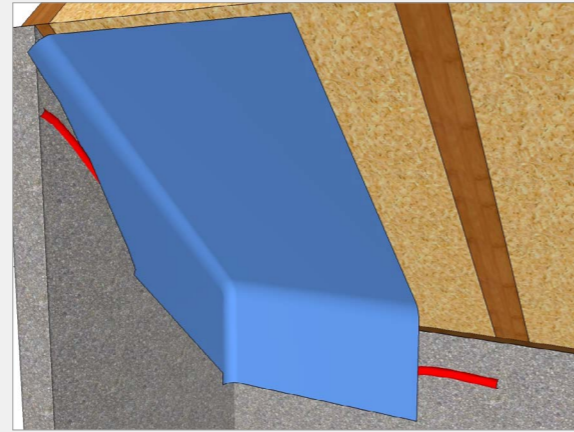
**COSMO DS-420.240**

#### Special properties:

- After curing self-adhesive, elastic adhesive joint
- High adhesive strength on different types of film
- Very high initial adhesion



PRODUCT GROUP **DS**



PRODUCT GROUP **DS**

### 12 Adhesive sealant BIO-BASED for bonding and sealing...

- Of the airtight connections of vapour barriers, vapour checks and sealing films on different building substrates

**COSMO DS-470.900**

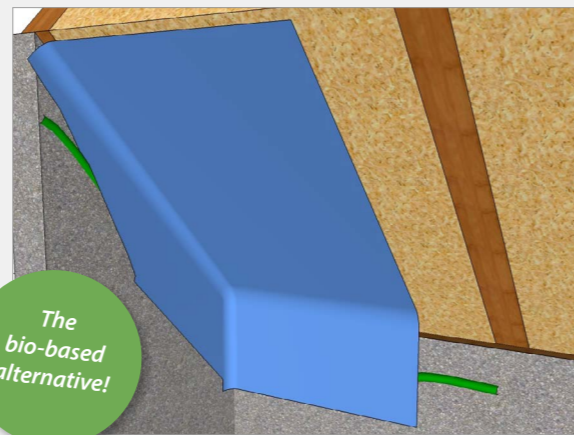
#### Special properties:

- **Contains approx. 47% bio-based carbon content**
- After curing self-adhesive, elastic adhesive joint
- High adhesive strength on different types of film
- Very high initial adhesion



8C092

The bio-based alternative!



PRODUCT GROUP **DS**

### 13 Powerfilm: Adhesive compound on the roll for bonding and sealing...

- Of the airtight connections of vapour barriers, vapour checks and sealing films on different building substrates

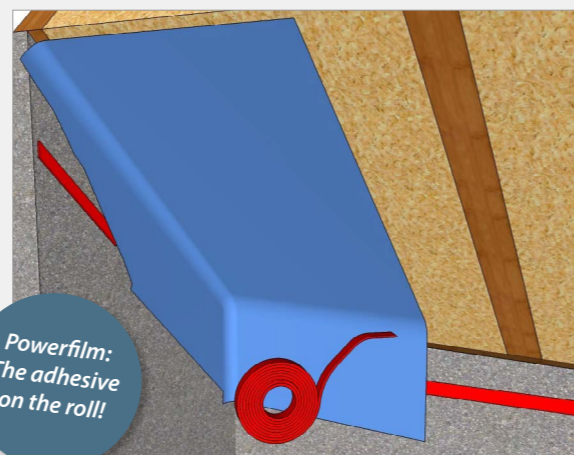
**COSMO DS-450.110**

#### Special properties:

- It can be processed easily, fast and cleanly
- No drying time required
- No cutting tools required



Powerfilm: The adhesive on the roll!



PRODUCT GROUP **DS**

### 14 Primer / first coat

- For preparing the substrate for self-adhesive joint tapes on window and door jambs - for the RAL assembly
- For adhesion promotion / improvement of acrylate, butyl and bitumen adhesive tapes on the most diverse absorbent substrate materials

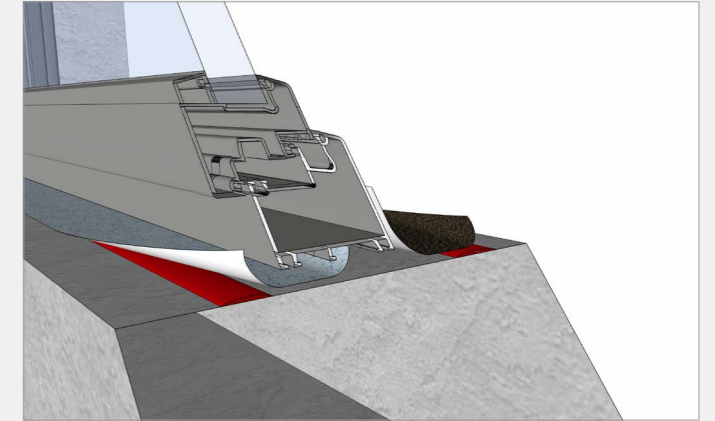
**COSMO SP-830.160**

#### Special properties:

- Optimum preparation for the substrate material
- Strong bonding strength to the joint tape due to self-adhesive properties
- Short flash time



PRODUCT GROUP **SP**



### 15 Adhesive sealant for assembly...

- For bonding of joint tapes on windows and door jambs inside - for the RAL assembly:

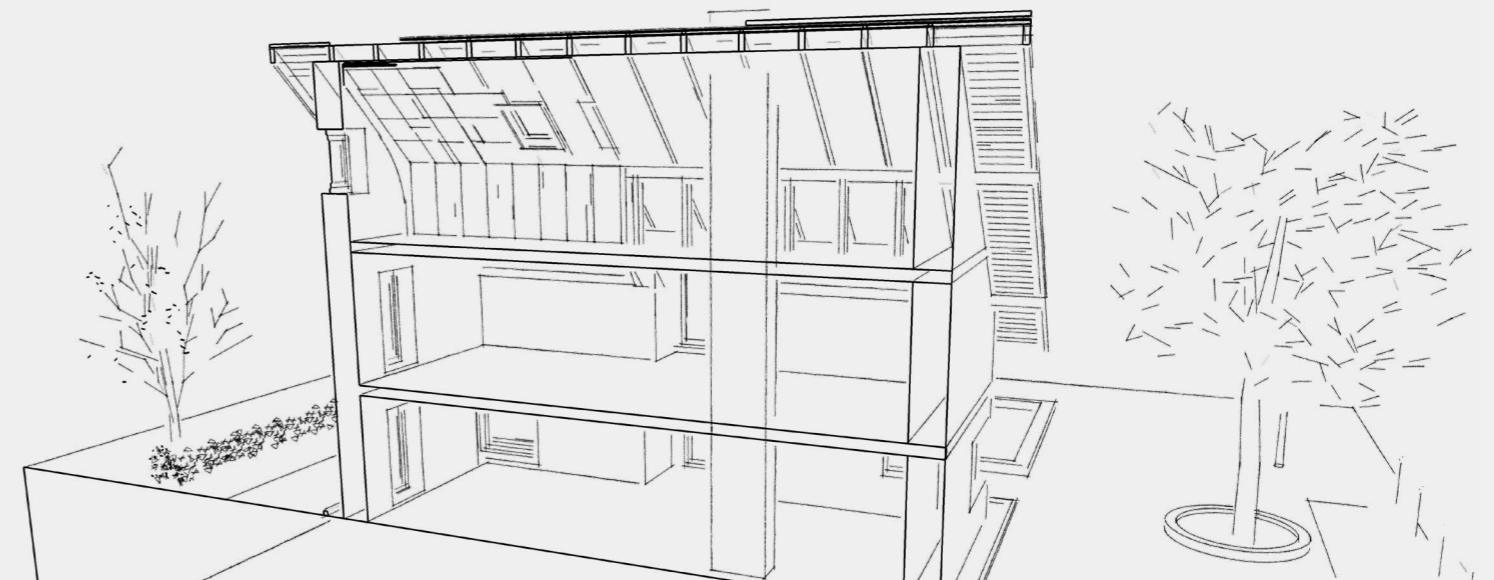
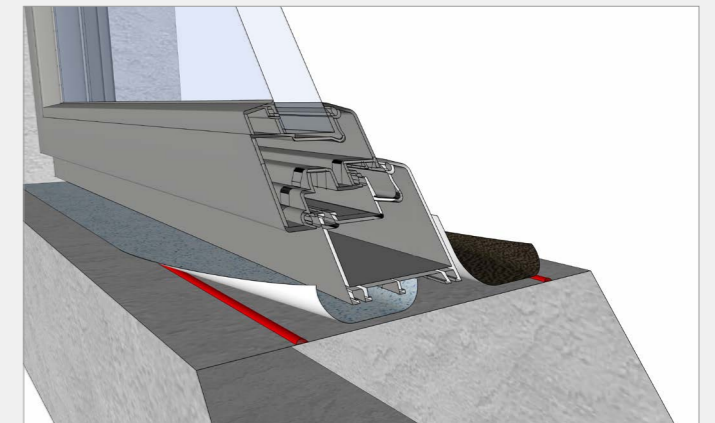
**COSMO DS-420.110**

#### Special properties:

- High initial adhesion and functional strength
- After curing not self-adhesive
- Joint-filling



PRODUCT GROUP **DS**

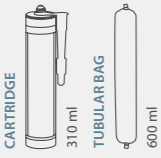
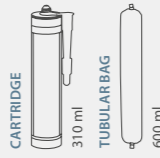
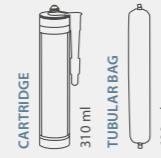
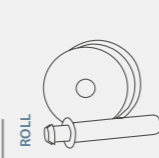
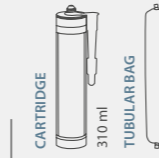
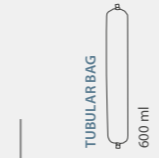


! Please find our applications at a glance on p. 12-13.



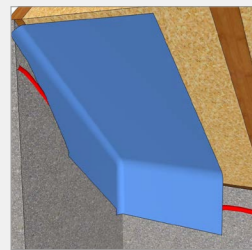
# Application matrix

## Our COSMO adhesives by comparison

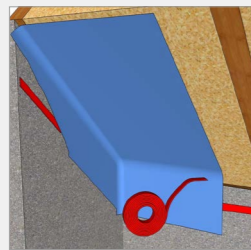
						
<b>Product designation</b>	<b>COSMO DS-420.110</b>	<b>COSMO DS-420.240</b>	<b>COSMO DS-470.900 BIOBASED</b>	<b>COSMO DS-450.110 Powerfilm</b>	<b>COSMO HD-110.110</b>	<b>COSMO HD-100.510</b>
<b>Product</b>	Adhesive sealant for vapour barriers	Adhesive sealant for vapour barriers	Adhesive sealant for vapour barriers	Adhesive sealant	Adhesive sealant for vapour barriers / roof underlay webs	Assembly adhesive sealant
<b>Basis</b>	Dispersion	Dispersion	Dispersion	TPE	1-C-MS	1-C-STP
<b>Application</b>						
Vapour checks/barriers "inside area"	●	●	●	●	●	○
Joint tapes for window and door assembly "inside area"	●	●	●	●	●	●
Joint tapes for window and door assembly "outside area"	○	○	○	●	●	●
Underlays "Outside area"	○	○	○	○	●	○
Façade webs "Outside area"	○	○	○	○	●	○

● Eminently suitable ○ Limited suitability ○ Not suitable

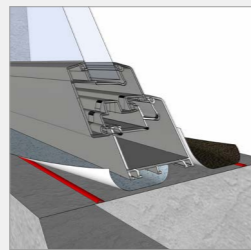
### Applications



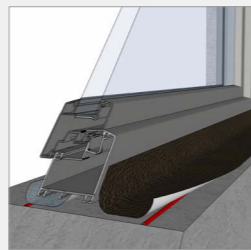
Vapour checks/barriers "inside area"



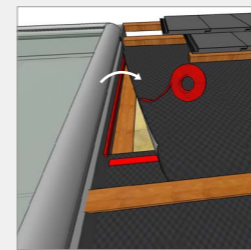
Joint tapes for window and door assembly "inside area"



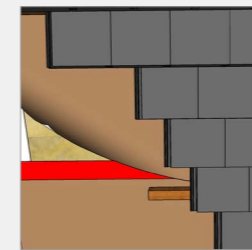
Joint tapes for window and door assembly "outside area"



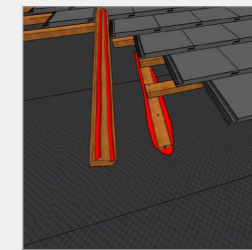
### Applications



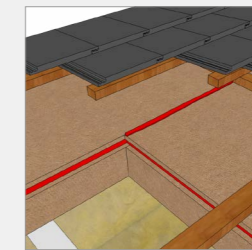
Underlays "Outside area" (Example: roof window)



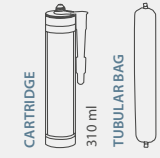
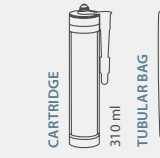


Façade webs "Outside area"



Nail sealing "Outside area"



Sealing of bonded structural connections and joints Wood fibre board "inside and outside"

				
<b>Product designation</b>	<b>COSMO HD-100.495</b>	<b>COSMO PU-100.120</b>	<b>COSMO PU-160.230</b>	<b>COSMO SL-680.120</b>
<b>Product</b>	Assembly adhesive sealant	Adhesive sealant for underlay web	Nail sealant	TPU sealant
<b>Basis</b>	1-C-STP	1-C-PUR	1-C-PUR	1-C-TPU
<b>Application</b>				
Underlays "Outside area"	○	●	○	●*
Façade webs "Outside area"	○	●	○	●*
Nail sealing "Outside area"	○	●	●	○
Sealing of cut edges "Outside area"	○	○	○	●*
Sealing of bonded structural connections and joints Wood fibre board "inside and outside"	●	●	○	○

\* For TPU coated undertrussing and façade sheets webs.

● Eminently suitable ○ Limited suitability ○ Not suitable

## Our service and advisory performances

Weiss, your competent and strong partner

### We strongly support you!

Weiss is representing top performance in the areas of **adhesive and sandwich element technology**.

For many decades, Weiss has been very successful in setting new market standards in terms of quality and excellent service. With our comprehensive product line of adhesives and sandwich panels, we are covering a wide variety of different applications.

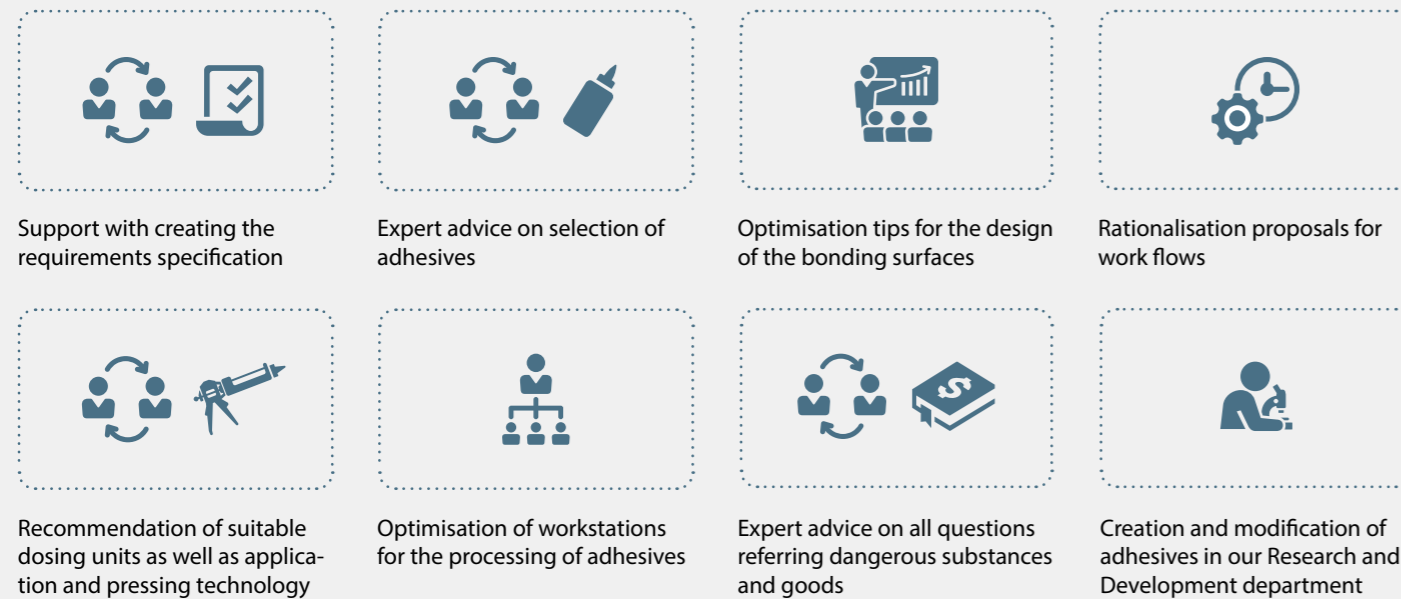
**Expert advice and service** are counted to the elementary core competencies of our company. For all technical questions referring the application of our products the competent consultants of our Service Center will be available for you with their specialist knowledge. We take your questions seriously and show you the ways to reach optimized results.



Our Service Center is available for you:

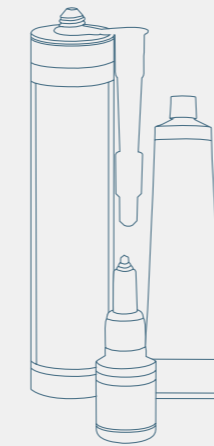
+49 (0) 2773 / 815-255  
+49 (0) 2773 / 815-274

## Our service and advisory performances



## Private label

3 steps to private label

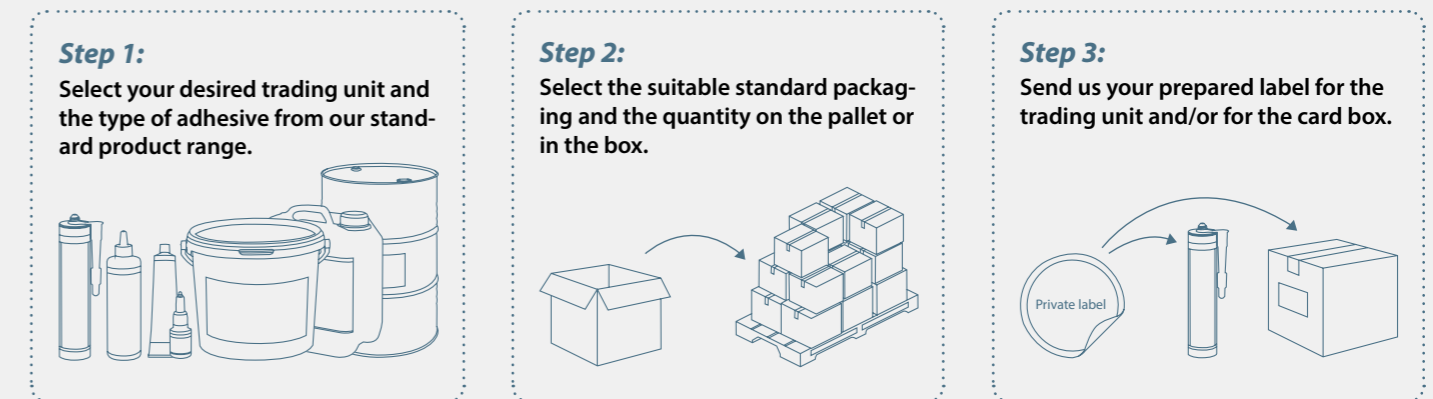


### 3 simple steps to your private label!

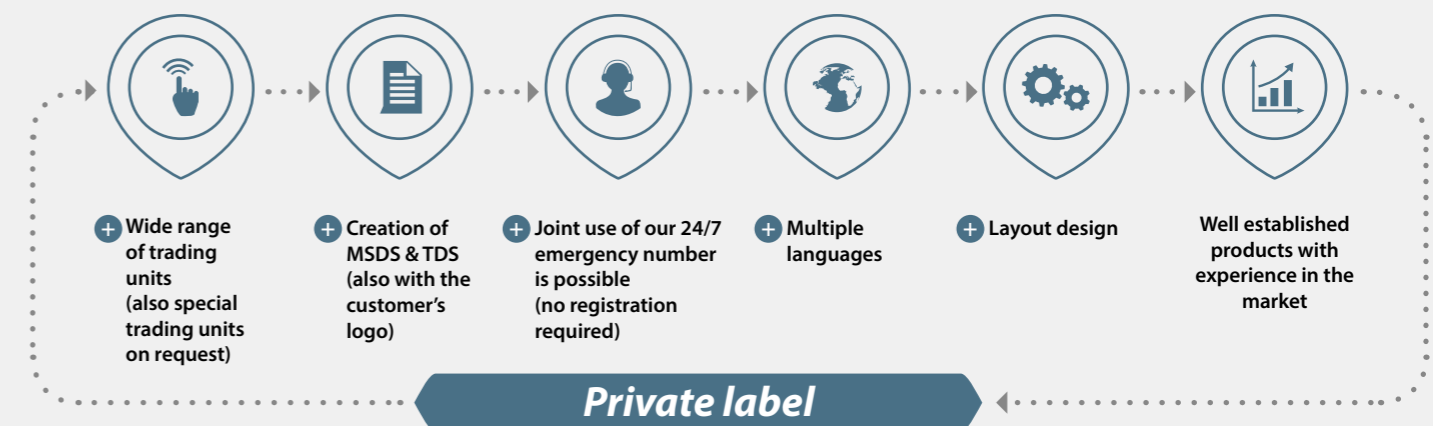
We would also like to produce and make up our products with your individual design (private label).

We are offering special flexibility as well as long-term experience and respond with sensitivity on your wishes. Your own brand can profit from the high quality and reliability of our products.

Order by means of only 3 steps easily and simply your private label adhesive.



Moreover, Weiss is offering an all-round carefree package to implement your private label optimally and as desired:



# An overview of our range of products

Experience quality on a whole new level, with the powerful products by Weiss:



## **COSMO Adhesives**

*Durably firm joints*

**COSMO CA** (Cyanoacrylates)  
**COSMO PU** (Polyurethane adhesives)  
**COSMO CL** (Cleaning agents)  
**COSMO SL** (Dispersion adhesives)  
**COSMO HD** (Hybrid adhesives)  
**COSMO EP** (Epoxy-resin adhesives)  
**COSMO DS** (Dispersion adhesives)  
**COSMO SP** (Service products)

### **Fields of application**

- + Windows and doors
- + Transportation / Marine engineering
- + Industry
- + Assembly
- + Dry construction
- + Airtight bonding
- + Wood / Furniture industry
- + Container construction
- + Composite panels
- + Fire protection
- + Advertising industry

### **Do you have any questions?**

**Our Service Center**  
**Business area Adhesives:**  
+49 (0) 2773 / 815 - 255  
+49 (0) 2773 / 815 - 274



## **COSMO Composite panels**

*Unlimited possibilities for design*

**COSMO Therm** (heat-insulating)  
**COSMO Silent** (sound insulating)  
**COSMO Protect** (penetration resistant)  
**COSMO Design** (grooved)  
**COSMO Tech** (individual)  
**COSMO Frame** (frame widening)

### **Fields of application**

- + Window and façade
- + Door construction
- + Industry
- + Automotive manufacturing
- + Trailer construction
- + Partition panel construction
- + Gate construction
- + Container construction
- + Energy conservation
- + Fire protection
- + Burglar resistance
- + Sound proofing

### **Do you have any questions?**

**Our Service Center**  
**Business Area Composite panels:**  
+49 (0) 2773 / 815 - 321  
**Our Service Center**  
**Business area Façade:**  
+49 (0) 5245 / 9241 - 21



## **PUDOL Cleaning and care agent**

*Cleanliness refreshes your senses*

**PUDOL SOFT**  
Mild cleaning agent for sensitive materials  
**PUDOL CARE**  
Maintenance product for high gloss and hygiene  
**PUDOL POWER**  
Powerful cleaning agent for extreme pollution  
**PUDOL FRESH**  
Cleaning agent for cleanliness and fresh air

### **Fields of application**

- + Flooring
- + Sanitary installations
- + Clothing care
- + Foodstuff industry
- + Household and gastronomy
- + Windows and glass
- + Dishwasher
- + Carpet and upholstery
- + Industry and workshop
- + Cars
- + Skin cleaning
- + Skin protection

### **Do you have any questions?**

**Our Service Center PUDOL:**  
+49 (0) 2743 / 9212 - 0

**weiss**

Plant I  
Weiss Chemie + Technik  
GmbH & Co. KG  
Hansastr. 2  
D-35708 Haiger

Phone: +49 (0) 2773 / 815 - 0  
Fax: +49 (0) 2773 / 815 - 200  
E-mail: ks@weiss-chemie.de

[www.weiss-chemie.de](http://www.weiss-chemie.de)

Plant II  
Weiss Chemie + Technik  
GmbH & Co. KG  
Siemensstr. 8  
D-33442 Herzebrock-Clarholz

Phone: +49 (0) 5245 / 9241 - 0  
Fax: +49 (0) 02773-815-300  
E-mail: se@weiss-chemie.de

**PUDOL**



**A subsidiary of the  
Weiss Group**

Pudol Chemie GmbH & Co. KG  
Bahnhofstr. 2  
D-57520 Niederdreisbach

Phone: +49 (0) 2743 / 9212 - 0  
Fax: +49 (0) 2743 / 9212 - 71  
E-mail: info@pudol.de  
[www.pudol.de](http://www.pudol.de)

*Cleanliness refreshes your senses*

*made by weiss*